



# S34U18

## Three-phase Smart Meter

The meter for commercial and industrial customers.

Communication capabilities over Cat-M and NB-IoT on several frequency bands (incl. 450MHz) the meters are aimed to be used for AMI/AMR/AMM and smart grids.

...powered by **intelliport**

### Key Feature

- CAT-M, NB-IoT, GPRS triple mode communication
- Complying with MID, IDIS, Rohs, CE certification.
- Secured communication. The connection between master station and data concentrator is encrypted.
- Supporting P1 interface.
- Supporting 13 months of billing data.
- Supporting 8 tariffs, 100 special days, 12 season tables, 8 week types, 8 days tables and 12 entries in a day table.

*To Optimize Power Grid Value*

Ordinary (Simple-function)  
Electricity Meter

Multi-function Electricity  
Meter

Smart Electricity Meter

Prepayment Electricity Meter

Automatic Meter Reading  
Products

In-home Display Products

Customer Interface Unit  
Products

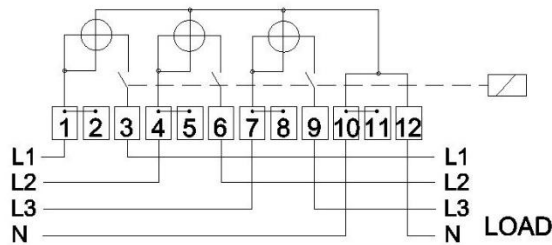


**SANXING** 三星

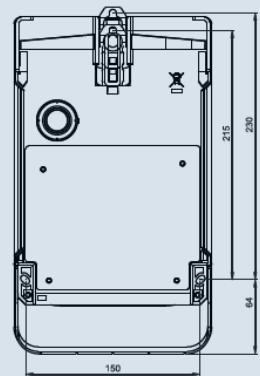
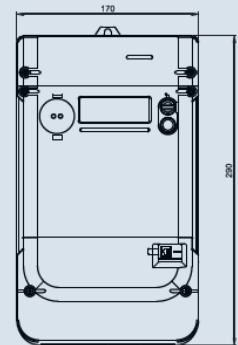
## Technical Specifications

<b>Voltage Ratings</b>	Reference Voltage	3*220V/380V~240/415V
	Operating Voltage Range	80%Un~120%Un
	Supply Frequency	50Hz
<b>Current Ratings</b>	Basic Current (Ib)	5A
	Maximum Current (Imax)	80A, 100A
	Starting Current	≤4%Ib
<b>Accuracy</b>		Active Cl. B or Cl.1, Reactive Cl.2
<b>Power Consumption</b>	Voltage Circuit	≤2W, 10VA per phase
	Current Circuit	≤1VA per phase
<b>Insulation Strength</b>	AC Voltage Test	4kV during 1 min
	Impulse Voltage Test	1.2/50μs mains connections 6kV
<b>Communication Interface</b>	CAT-M	B1/B2/B3/B4/B5/B8/B12/B13/B14/B18/B19/B20/B25/B26/B27/B28/B31/B66/B72/B85
	NB-IoT	B1/B2/B3/B4/B5/B8/B12/B13/B18/B19/B20/B25/B26/B28/B31/B66/B85
	GSM/GPRS	850/900/1800/1900MHz
<b>Temperature</b>	Operation Range	-40°C~70°C
	Limit Range	-40°C~80°C
<b>Protection</b>		Class 2
<b>RTC Accuracy</b>		≤0.5s/d
<b>IP Rating</b>		IP54 indoor
<b>Lifetime</b>		≥20 years

## Connection Diagram



## Dimensions



NINGBO SANXING SMART ELECTRIC CO.,LTD.

Te l: +86-574-88072218

Fax: +86-574-88220583

E-mail: info@overseas.sanxing.com

Add: No.17, Fenglin Road, Cicheng Town, Jiangbei District, Ningbo, China, 315034

[www.sanxingelectric.com](http://www.sanxingelectric.com)

Copyright ownership belongs to Sanxing

